

Cub Scouts Wolf



OREGON COAST AQUARIUM

Your visit to the aquarium satisfies the following badge requirement:
#7 Wildlife Conservation Academic Pin
#3 Scientist Academic Belt Loop

It is up to your troop leader to sign off on completed activities to receive your badge.

Sandy Shores Exhibit Gallery

Acheivment 7a, b: Your Living World

Land, air and water can get dirty. Trash on land can end up in rivers that flow to the ocean. Wind can move pollution in the air over the ocean. Litter from boats can end up in the ocean. Look in the center Pier Piling tank.

- 1) List all the man-made litter items you can find. How does this make you feel? Can any of these things be recycled?

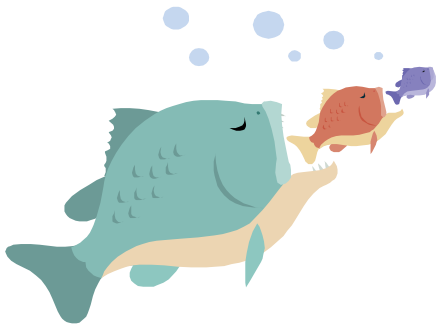
- 3) What are some things you can do to help the environment stay clean and healthy?

Rocky Shores

Arrow Point Trail, Elective #12 a: Be an Artist

An ADAPTATION is something a plant or an animal has to help it survive in its environment. The Rocky Shore can be a treacherous place to live with crashing waves and the risk of the tide leaving you behind in a low oxygen tide pool! Look carefully at the animals in this exhibit. Draw your favorite animal that you see here and label some of it's ADAPTATIONS such as tube feet, 5 arms, camouflage.....

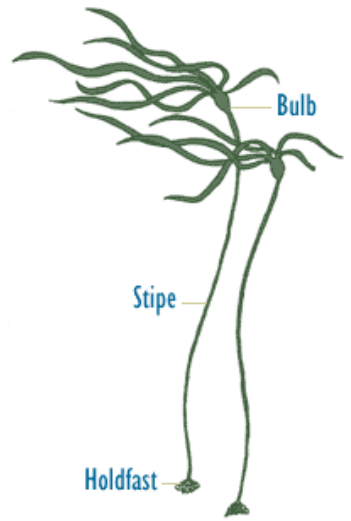




OREGON COAST AQUARIUM

Coastal Waters

Arrow Point Trail, Elective #19a: Fishing



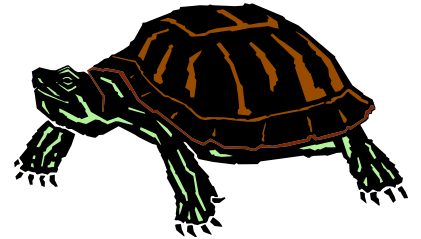
1) List 5 different kinds of fish found in the Oregon Kelp Forest Tank.
How do you tell the different kinds of fish apart?

2) How long does a Splitnose Rockfish live? (hint: they live with the giant Japanese Shore Crabs and read the information screen)

Swampland

Arrow Point Trail, Elective #12b: Be an Artist

Work together to tell a story about one or some of the animals found here by drawing a 3 part cartoon.



--	--	--